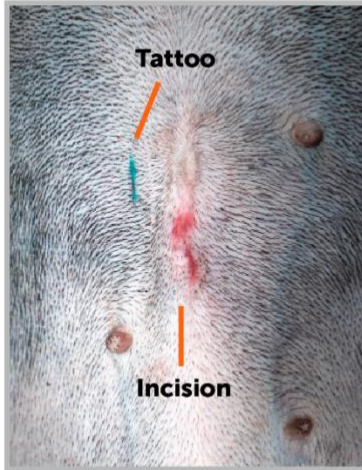


BELOW ARE PICTURES OF HOW YOUR PET'S INCISION MAY LOOK FROM THE DAY OF SURGERY TO TEN DAYS AFTER SURGERY. PLEASE REVIEW THESE CAREFULLY IF YOU HAVE ANY CONCERNS ABOUT HOW YOUR PET'S INCISION LOOKS.

### Female Dogs



Day 1



Day 5



Day 10

### Male Dogs



Day 1



Day 5



Day 10

## Female Cats



Day 1



Day 5

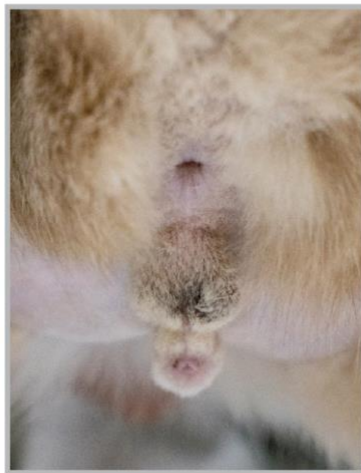


Day 10

## Male Cats



Day 1



Day 5



Day 10